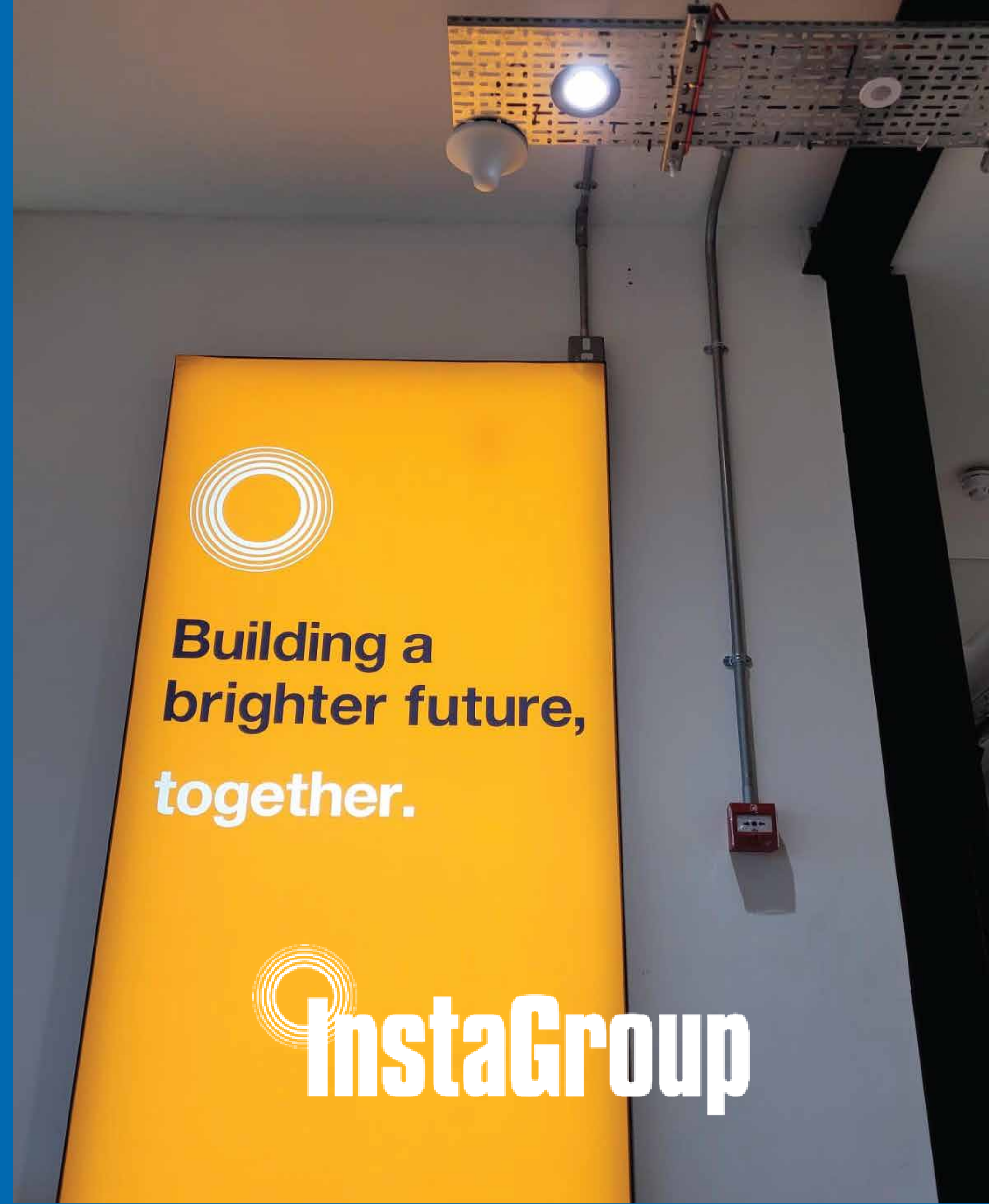


Case Study

Office and Warehouse Spaces



About Us

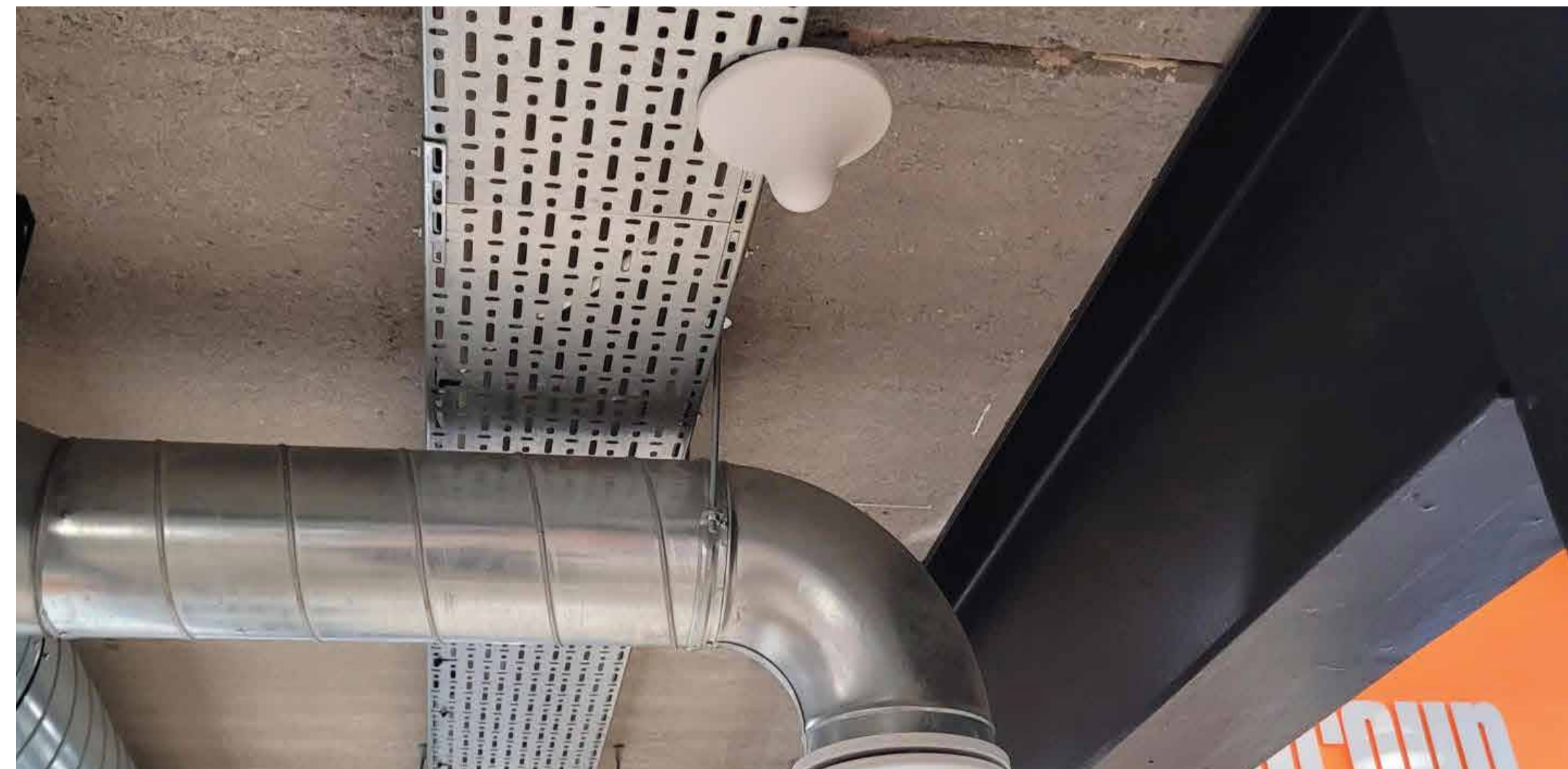
Mobile Signal Solutions are UK based installers of commercial signal boosting systems, focused on improving mobile phone signals indoors.

Our professional team are approved installers of carrier grade equipment compatible with all UK networks. We work with the client from site survey to installation and offer maintenance & support contracts. Working together we ensure 100% network coverage, no budget overruns, and we offer upfront payment or leasing options.

Our main aim is that clients are happy to recommend us to others. Each system is voice and 4G compatible but we also future proof the design to carry other new mobile frequencies as they are launched e.g. 5G and 6G compatible systems.

The Property

The Instagroup offices consist of a modern, recently renovated office space spread across two floors, with an attached warehousing area. The main focus was on providing strong and reliable mobile coverage throughout the office, with secondary coverage in the warehouse. Given the aesthetic priorities, the solution needed to be discreet, maintaining the sleek appearance of the building.



The Challenge

Achieving comprehensive coverage without visible cables or bulky equipment was essential. The antenna needed to be low-profile and capable of supporting 5G to future-proof the installation. A detailed survey identified suitable locations for outdoor antennas, ingress points, and cable routes, making sure there would be optimal Vodafone signal boosted throughout the building.

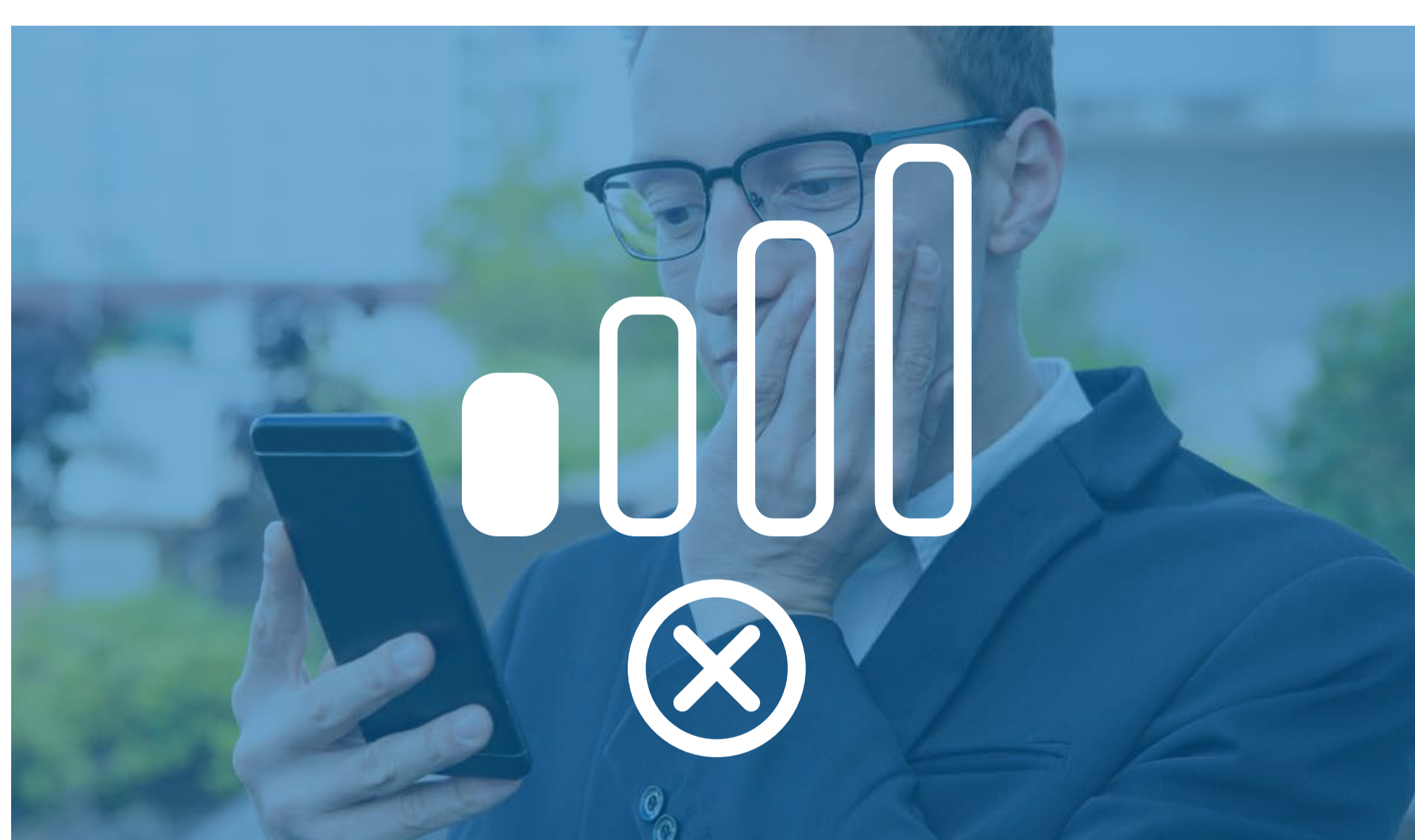
The Solution

A powerful commercial-grade network unit was chosen, with a strategically designed Distributed Antenna System (DAS) that minimised the number of antennas required while maintaining full coverage. The system was tailored to Vodafone but was built to allow easy future upgrades or additional network integration.



The Results

The Instagroup offices now enjoy full Vodafone coverage in both the primary office and secondary warehouse areas. The discreet antennas and hidden cables maintain the building's modern aesthetic, while enhanced signal strength and improved data speeds have boosted communication and client interactions.



What Causes Poor Coverage?

Distance from the local base station or the construction of the outer walls are the main factors. Outer stone walls blocking signal is a common problem in many older buildings, due to the thickness of the walls signal finds it difficult to permeate indoors, especially in basements and areas with no windows.

In modern buildings, the high level of energy insulation also causes signals to be blocked. Buildings using foil backed insulation on roofs and walls, alongside variants of window panes where the glass contains metal particles to reflect the sun's rays means walls, roofs and windows all block the mobile signal.

Need A Solution?

If you're looking to improve connection across your site but aren't sure where to start give us a call today. Our team are happy to talk through your options and set up a survey.



Step One: On-Site Survey

You will meet with our surveyor to discuss your needs in full. You can discuss areas of importance and agree on a design plan for the system you require.



Step Two: System Design

Our surveyor will then design the best possible system. The surveyor will then meet with the operations team to put a cost together for that system.



Step Three: Installation

Before you know it we will have a team of highly skilled engineers on-site and your system will be up and running and providing flawless mobile signal throughout.

"We had no mobile signal when we arrived at our new site 6 years ago. We have used Mobile Signal Solutions twice now and the equipment performance has been perfect. When we have had issues with mobile providers, mobile Signals Solutions has helped out straight away."

Chris, Gestamp